

Welcome to EnterMedicare: A New MAPFRE USA Benefit offering Medicare Assistance for You and Your Family

MAPFRE has partnered with EnterMedicare to ease the burden of figuring out how Medicare can work for you and your family. Finding the right plan can be confusing, but that's why we're here to help. We know you have a lot of Medicare questions and our role is to help you and your family members understand all your options.

How can EnterMedicare help?:

1. Start with our [Getting Started with EnterMedicare guide](#); it walks you through the basics of what our Medicare platform offers step-by-step.
2. Take advantage of our Medicare learning center and [take your first course!](#) We know you'll get a lot out of each one. We recommend starting with the basics (Part A and Part B) first.
3. Connect with a Medicare expert directly. Reach out to us if you'd like to be connected!

We're excited to help you and your family with your Medicare needs. Don't hesitate to reach out with specific questions — we'd love to hear from you! You can click the button below to get started:

[Get Started](#)

Or, email us with any questions at hello@entermedicare.com. We are excited to be your partner.

Your EnterMedicare Team

EnterMedicare



EnterMedicare is HIPAA-compliant

EnterMedicare, 600 Corporate Pointe, Ste 600, Culver City, CA 90230

[Unsubscribe](#) [{{!--Manage--}}](#) [{{!--preferences--}}](#)

Compare your current plan with Medicare plans in less than 15 minutes.

More and more people are switching to Medicare each year -- the benefits are real. Did you know there may be Medicare plans that allow you to keep your current doctors, your current coverage, and even your prescription drug coverage (and they might even be more affordable than your current plan)?

If you need guidance on how to get started with EnterMedicare, and how to find plans that work for you, we would be happy to walk you through our platform over the phone -- just email us your availability and we'll set up a time that works for you.

Sign up and complete your profile today to learn what savings could be at your fingertips.

Even better, we have Medicare experts ready to help you learn more about your coverage needs and switch when you're ready. Reach out any time!

[Sign Up Here](#)

Or, email us with any questions at hello@entermedicare.com. We are excited to be your day one partner.

Your EnterMedicare Team

EnterMedicare



EnterMedicare is HIPAA-compliant

EnterMedicare, 600 Corporate Pointe, Ste 600, Culver City, CA 90230

[Unsubscribe](#) [{{!--Manage--}}](#) [{{!--preferences--}}](#)

Medicare can be confusing, so let EnterMedicare help.

Medicare is a complicated topic and that's why we exist: to make learning about Medicare as easy as possible.

If you need help navigating our website, or want to learn how to use EnterMedicare to your advantage, reach out to us any time. We can hop on a quick phone call and walk you through the most useful parts, like how you can compare your current plan with Medicare plans, or how you can reach out to a Medicare expert to ask in-depth questions regarding your specific needs. Medicare's open enrollment period ends December 7, so reach out today!

Let us know if a quick phone call would be helpful and we would love to find time to speak with you -- you can reply to us with your availability.

[Get Started](#)

Or, email us with any questions at hello@entermedicare.com. We are excited to be your day one partner.

Your EnterMedicare Team

EnterMedicare



EnterMedicare is HIPAA-compliant

EnterMedicare, 600 Corporate Pointe, Ste 600, Culver City, CA 90230

[Unsubscribe](#) [{{!-- Manage--}}.{{!-- preferences--}}](#)

Medicare's Annual Enrollment Period is Ending Soon!

The time to enroll in Medicare this year is coming to a close on December 7. You can use our free courses to brush up on Parts A & B, learn how Advantage plans work, and find Medicare plans that provide the exact coverage you need. We have Medicare Experts ready to help you explore your options and switch today.

Medicare can be confusing, and we're here to help. Make sure you find time to connect with an Expert before Tuesday is over!

[Get Started](#)

Or, email us with any questions at hello@entermedicare.com. We are excited to be your day one partner.

Your EnterMedicare Team

EnterMedicare



EnterMedicare is HIPAA-compliant

EnterMedicare, 600 Corporate Pointe, Ste 600, Culver City, CA 90230

[Unsubscribe](#) [Manage](#) [preferences](#)

Your birthday is coming up!

Today is a big day! You turn 65 three months from now, which means you are now eligible to choose a Medicare plan. This is an exciting and often confusing time where you need to decide if switching is right for you. {{companyName}} has partnered with EnterMedicare to help you make this important decision.

It's designed to take the complexity out and make the Medicare experience easy to understand.

Even better, we have Medicare experts ready to help you learn more about your coverage needs and switch when you're ready. Reach out any time!

[Sign Up Here](#)

Or, email us with any questions at hello@entermedicare.com. We are excited to be your day one partner.

Your EnterMedicare Team

EnterMedicare



EnterMedicare is HIPAA-compliant

EnterMedicare, 600 Corporate Pointe, Ste 600, Culver City, CA 90230

[Unsubscribe](#) [{{!--Manage--}}](#) [{{!--preferences--}}](#)

Happy birthday from EnterMedicare!

Today you're 3 months into being eligible to choose Medicare. EnterMedicare can help find the perfect plan for you, while allowing you to keep your current doctors and prescription drug coverage, and potentially save you money each month.

Across Medicare, there are plans that include gym memberships, vision, and dental plans! Reach out so we can show you how to find the coverage options that suit your lifestyle.

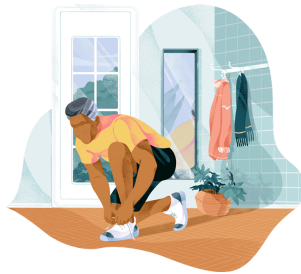
Your birthday window for your Initial Enrollment Period ends 3 months from today, so make an account or log into our platform today to compare plans and calculate potential savings. Reach out any time if you have questions.

[Sign Up Here](#)

Or, email us with any questions at hello@entermedicare.com. We are excited to be your day one partner.

Your EnterMedicare Team

EnterMedicare



EnterMedicare is HIPAA-compliant

EnterMedicare, 600 Corporate Pointe, Ste 600, Culver City, CA 90230

[Unsubscribe](#) [Manage](#) [preferences](#)

Your Medicare Initial Enrollment Period is Ending Soon!

In one month, your birthday enrollment period will end, which means now is the perfect time to explore your options and choose a Medicare plan that fits your budget and lifestyle.

Some Medicare Advantage plans offer extra perks, like eye and ear care, fitness memberships, and prescription home delivery. Our platform can show you the best plans for you based on a variety of individualized factors, including your current doctors, required drug coverage, and income bracket.

Our Medicare Experts and the EnterMedicare team are here to answer any questions you have about Medicare.

[Sign Up Here](#)

Email us with any questions at hello@entermedicare.com. We are excited to be your day one partner.

Your EnterMedicare Team

EnterMedicare



EnterMedicare is HIPAA-compliant

EnterMedicare, 600 Corporate Pointe, Ste 600, Culver City, CA 90230

[Unsubscribe](#) [Manage preferences](#)

Medicare Experts are standing by to help you find better coverage.

EnterMedicare has some of the best Medicare experts available to help you switch your healthcare plan when you're ready.

Medicare can be complicated, but it has the potential to save you money, while allowing you to keep your current coverage, including your doctors! It can be difficult to know where to look up information on Part A or how to sign up for Part B, and that's why we're here to help.

EnterMedicare is designed to help you with the hardest parts of Medicare, and that includes an elite team of experts who are trained to help you find the best policy for your desired coverage.

We have real people who can walk you through how to use our website, so you can do your own research before you chat with a Medicare Expert -- just reach out to us to get connected!

[Log In](#)

Or, email us with any questions at hello@entermedicare.com. We are excited to be your day one partner.

Your EnterMedicare Team

EnterMedicare



EnterMedicare is HIPAA-compliant

EnterMedicare, 600 Corporate Pointe, Ste 600, Culver City, CA 90230

[Unsubscribe](#) [Manage](#) [preferences](#)

Still need help with Medicare?

We're sure you still have a lot of Medicare questions. A great place to start is with our [Getting Started with EnterMedicare guide](#); it walks you through the basics of what our platform offers step-by-step, including how to take our [online Medicare courses](#) (they're more fun than they sound).

If you need help learning how to use our website, we're happy to set up a phone call and walk you through it -- just reply to this email with your availability. We're excited to continue helping you with your Medicare needs. Don't hesitate to reach out with specific questions — we'd love to hear from you.

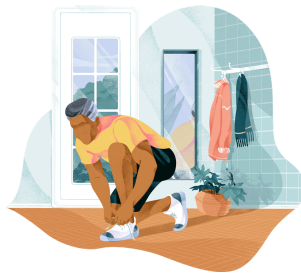
When you feel ready to switch to Medicare, we can connect you with a Medicare expert directly. Reach out to us if you'd like to be connected!

[Log In](#)

Or, email us with any questions at hello@entermedicare.com. We are excited to be your day one partner.

Your EnterMedicare Team

EnterMedicare



EnterMedicare is HIPAA-compliant

EnterMedicare, 600 Corporate Pointe, Ste 600, Culver City, CA 90230

[Unsubscribe](#) [Manage](#) [preferences](#)

Medicare can be confusing -- EnterMedicare can help.

We wanted to check in one more time and see how we can help you get the most out of EnterMedicare.

Our [Medicare courses](#) are designed to be easy to understand and quick to complete. We recommend starting with the basics first (Part A and Part B), since they tend to be the most confusing in terms of coverage.

We can also connect you with an Expert who can walk you through the in-depth questions you have regarding Medicare -- reach out if you'd like to be connected. Otherwise, our team can always make time for a phone call or video chat if you would like to learn how to compare plans and use other features on our site -- just reply with your availability!

[Log In](#)

Or, email us with any questions at hello@entermedicare.com. We are excited to be your day one partner.

Your EnterMedicare Team

EnterMedicare



EnterMedicare is HIPAA-compliant

EnterMedicare, 600 Corporate Pointe, Ste 600, Culver City, CA 90230

[Unsubscribe](#) [{{!-- Manage --}}](#) [{{!-- preferences --}}](#)